



The Right Move

2009
AUG.



English Chess Federation—Junior Chess Magazine

director.juniorchess@englishchess.org.uk

WELLINGTON COLLEGE WINS YATELEY MANOR NATIONAL SCHOOLS CHAMPIONSHIP

The competition got under way in October with an increased entry of 156 teams. The Zones (see below) were completed by mid February and, as an additional route to qualification for the National Stage, there were Last Chance Sa-



loons (7th February at Nottingham HS and 8th February at Wilson's School) offering qualifying places to teams that had not qualified through the Zones.

The first two rounds of the National Stage were completed half way through May and there was then, as always, an intermission while people sat exams. The eight surviving teams resumed play on 2nd and 3rd July with the Finals at Uppingham School.



The age range at Uppingham, at six and three-quarter years, must have been the largest ever. Aughton St Michaels, two years ago, the first primary school ever to make the finals, put in a remarkable repeat appearance. Nottingham High School, at the other end of the scale, were there for the sixth year running. Three of their current squad were in the 2004 team, and one of them (another record?) has not missed a year in that time.

This year's event was also marked by some strong new teams. Norwich School looked too strong to be first-time attenders. A reascent Winchester College — not quite first-timers, but the last time was in 1960 — looked

strong contenders in the Plate, and you would not have guessed that Reading School were in their first ever year of the competition, in recent times at least.



Then, Wellington College, last year's Plate runners-up, were in the Championship this time with a much strengthened team; and Nottingham HS, though missing top board Ankush Khandelwal, were still very strong. The Championship quarter-finals produced probably the best match of the two days. Wellington College looked to have things under control against Norwich School, but a sudden accident threw everything into doubt and in the end Wellington scraped home on board count in an exciting finish.



Nottingham HS, meanwhile, were securing the expected victory against a Dulwich College team seriously weakened by unavailability of players. Dulwich suffered the same fate against Norwich next day in the third place play-off.



The Championship Final was doubly contested but Wellington never looked like requiring their one-year age handicap advantage, and ground out a win by a fairly comfortable $4\frac{1}{2} - 1\frac{1}{2}$.

In the Plate semi-finals Wilson's, considerably improved since last year, dispatched Aughton St Michaels efficiently. Reading School produced an upset by knocking out the higher-graded Winchester College, whose $4 - 2$ score was insufficient to overcome Reading's age advantage. Winchester beat Aughton St

Michaels $6 - 0$ next day in the play-off, but Aughton looked for a good while to have serious chances of scoring the $1\frac{1}{2}$ they needed. In the Final, Wilson's, on level terms by age, ran out winners by $4\frac{1}{2} - 1\frac{1}{2}$. David Welch, ECF Chief Arbiter, officiated as always. Andrew Martin, representing the sponsors, presented the prizes and judged the best game prize (and was observed doing some coaching when not otherwise occupied). Best game: Michael Keetley of Nottingham HS, who fittingly is the six-times attender mentioned earlier. Highly commended: Felix Ynojosa.



At the close of proceedings Andrew Martin announced that the Yateley Manor sponsorship will continue next year.

Richard Haddrell



Tabulated results can be found for the ECF results on page 9



EDITOR'S FOREWORD AND BASIC ADVICE

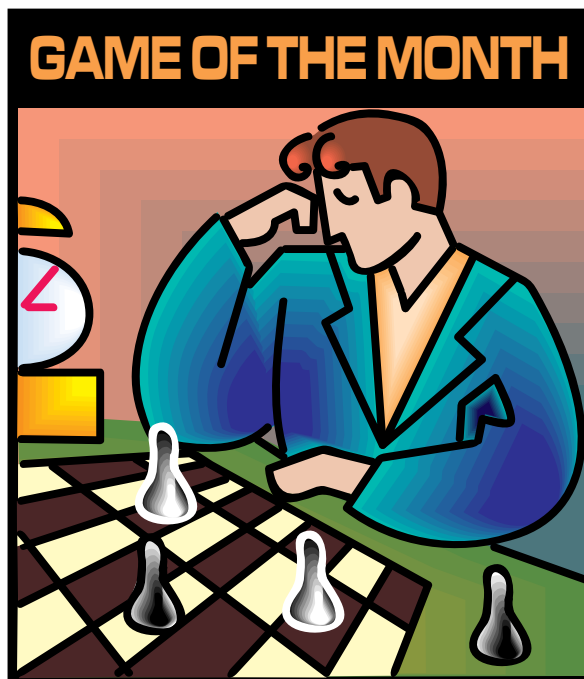
by Andrew Martin
International Master

What a packed issue we have this month! Further good news is that Holloid Plastics have started distributing the free chess sets to schools all over the country, ably assisted by the English Chess Federation. For more information contact either Caroline Morris (caroline@holloid-plastics.co.uk) or Kirstie Lapworth at the ECF Office.

Andrew

CONTENTS AUGUST 2009

Wellington College Wins NSC	1
From Andrew Martin.....	4
Game of the Month	4
August Prize Puzzle	6
EPSCA Schools' Finals	6
Yately Manor NSC 2008-9.....	7
Route to ECF NSF.....	9
Summerscale Coaching/Trnmnt.....	11
Popular Chess Quizzes.....	14
Best Quiz Answers	15
Answer to July Quiz	15



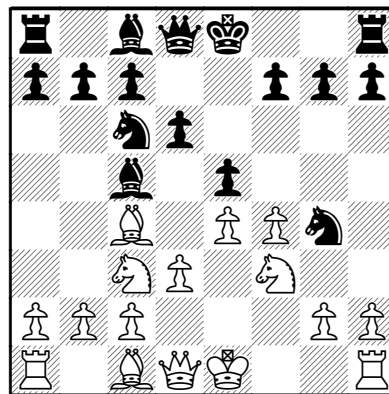
M Keetley - A Galliano

[C30]

English National Schools Final 2009

This is the best game prize winner from the recently-concluded National Schools Championship. The ECF, sponsors Yateley Manor School and main organiser Richard Haddrell are to be congratulated for running such a first-class event.

1.e4 e5 2.f4 ♘c5 3.♘f3 d6 4.♙c4 ♘f6 5.♘c3 ♘c6 6.d3 ♘g4!?



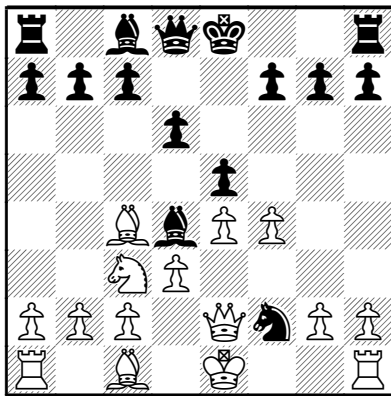
A very aggressive and little-known alternative to the normal 6...♙g4 or; 6...a6.
7.♙e2

7.♘g5! h6 (7...♖f8 8.f5 ♘f2 9.♙h5!) 8.f5 h×g5 (8...♘f2 9.♙h5+–) 9.♙xg4 is recommended as good for White by Korchnoi and Zak.

7...♙f2+ 8.♚d1 ♘d4N

8...♙b6 9.♖f1 ♘d4 10.♘xd4 (10.♙e1 ♙d7 11.♘xd4 ♙xd4 12.h3 ♘f6 13.♙e3 ♙xe3 14.♙xe3 ♘h5 15.fxe5 0-0 16.g4 ♙h4 17.gxh5 ♙xh5+ 18.♚d2 ♙xe5 19.♖f2 b5 20.d4 ♙h5 21.♙f1 ♖ad8 22.♙g2 c5 23.d5 b4 24.♘e2 ♙e5 **Kunze,C (1215)–Braunstein,F (1404)/Seifhennersdorf 2001** 25.♖b1+–) 10...♙xd4 11.f5 ♙h4 12.g3 ♙h3 13.♘d5 ♘h2 14.♖h1 ♙xg3 15.♖xh2 ♙g1+ 16.♚d2 ♙g5+ 17.♘e3 ♙xe3+ 18.♙xe3 ♙xe3+ 19.♚xe3 a6 20.♙d2 b5 21.♙b3 ♚e7 22.♖g1 ♚f6 23.♚f3+– **Boudier,E–Durez,C/Bethune 2001.**

9.♘xd4 ♙xd4 10.♚e1 ♘f2



Continuing with the same brazen play. Keetley keeps cool.

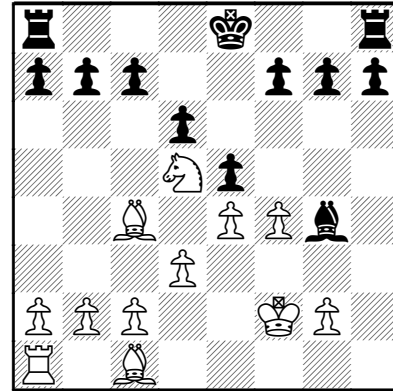
10...♙h4+ 11.g3 ♙f2+ 12.♙xf2 ♘xf2 13.gxh4 ♘xh1 14.fxe5 dxe5 15.♚f1 is good for White, as the Knight has no escape.

11.♖f1 ♙g4 12.♙d2 ♙h4 13.♖xf2 ♙xh2 14.♘d5 ♙h1+ 15.♖f1 ♙h4+ 16.♖f2 ♙xf2+

Black should just recognise that a repetition is the wisest course of ac-

tion. Galliano's insistence on playing for the win leads him into an endgame where he is worse and in which Keetley gets a chance to show his strength. 16...♙h1+=

17.♙xf2 ♙xf2+ 18.♚xf2±

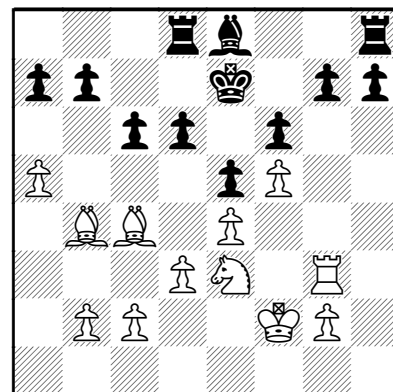


The problem for Black in this endgame is that he has no counterplay and has to conduct a grim defence. It is not easy for White and will require methodical improvement of the position, but Keetley is up to the job.

18...♚d7 19.f5 f6 20.♙d2 c6 21.♘e3 ♙h5 22.♙b4 ♚c7 23.a4! ♖ad8 24.a5!

First stage: Nail down the pawn structure and prevent Black from breaking free.

24...♙e8 25.♖h1 ♚d7 26.♖h3 ♚e7 27.♖g3!



Second stage: Force weaknesses. If Black ever plays ...Kf8, White simply manoeuvres his Knight to c4 and d6 falls.

27...g6 28.c3 b5 29.♙e6 ♙f7
30.♙xf7 ♔xf7 31.♘g4 g5 32.♖h3
h5 33.♘e3 a6 34.♖h1 d5

34...♙e7 35.♙a3 ♔f7 36.♘c2 c5
37.♘e3±

35.exd5 cxd5 36.d4!

Third Stage: Fix weaknesses. The Knight now has targets at d5 and a6 to aim at.

36...e4 37.g3 ♖d7

Black should create a passed pawn: 37...h4 but even here he is in danger: 38.♙g2 ♖h7 39.♙c5 ♖hh8 40.♙b6 ♖d7 41.♘c2 and White intends Nb4xa6.

38.♙c5 ♙g7 39.♘c2 ♔h6 40.♘b4
♖a8 41.♙e3 ♖c8?

He hasn't got the patience to sit tight. Black has to wait and do precisely nothing, not exactly Galliano's forte.

42.♘xa6 ♖a8 43.♘b4 ♖xa5 44.♙f8+
♔h7 45.♖xh5+ ♔g8 46.♙c5 ♖a1

47.♘c2 ♖f1 48.♙e2 ♖xf5 49.♘e1

49.♘e3 ♖f3 50.g4 is also winning.

49...♖h7 50.♖xh7 ♔xh7 51.♙d6 g4
52.♘g2±

Black's activity has led him directly into this lost position.

52...♖h5 53.♘f4 ♖h2+ 54.♙e3 ♖xb2
55.♘xd5 f5 56.♘e7 ♖c2 57.♙b4!
1-0

A fighting game by both players, considering the tension of the final and a worthy winner of the Best Game Prize.

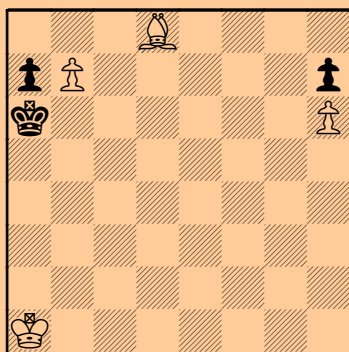
EPSCA Schools' Finals

The finals of this event took place on June 30th and July 1st at Pontin's Holiday Centre at Brean Sands in Somerset. The top 8 schools out of around 200 entries in both U11 and U9 compete in an all play all event for the title of English Champions. As well as the chess there are plenty of other activities on offer both from the Centre (swimming, archery, table tennis, lawn tennis, pool, golf and many others) and a Go Karting Championship and Blitz Chess organised by the chess. QEGS Wakefield, although competing against secondary drivers, showed their ability on the Go Kart track whilst almost all the Blitz prizes went to the older players.

There were 7 games of chess to be played, four on the Tuesday and three on Wednesday and in both sections it appeared obvious by Tuesday evening which the two top teams would be. The

continued on pages 7-8

PUZZLE FOR THE MONTH OF AUGUST



White to play. What should the result of the game be with best play? Watch out; this is tricky!

YATELEY MANOR NATIONAL SCHOOLS CHAMPIONSHIP 2008-9

NATIONAL STAGE: MATCH RESULTS

AUGUST 2009

CHAMPIONSHIP FINAL

	Wellington College	3.7.09	Nottingham HS
1	Felix Ynojosa 183 (W)	1 0	Kishan Lakhani 179
	Alex Galliano 170	0 1	Michael Keetley 150
2	Akash Jain 167	1 0	Oliver Exton 132
3	Lateefah Messam Sparks 143	½ ½	Jonathan Day 130
4	Adrian Archer-Lock 129	1 0	Daniel Lin 137
5	Matthew Kim 89	1 0	Ted Pynegar 124
6	(15.7)	4½ 1½	(17.5)

THIRD PLACE PLAY-OFF

	Norwich School	3.7.09	Dulwich College
1	Tom Robinson 169 (W)	½ ½	Yari Voropayev 155 (W)
	William Boulton 148	1 0	Alex Schymyck 95
2	Gordon Scott 131	1 0	Will Glover 82
3	Gabriel Barr 114	1 0	Robert Pagliuca
4	Daniel Molnar 107	1 0	Nick Nicheperovich 40
5	Nicholas Franklin 88	1 0	Thomas Wood
6	(16.0)	5½ ½	(15.5)

SEMI-FINALS

	Norwich School	2.7.09	Wellington College
1	Tom Robinson 169 (W)	0 1	Felix Ynojosa 183
	William Boulton 148	½ ½	Alex Galliano 170
2	Gordon Scott 131	½ ½	Akash Jain 167
3	Gabriel Barr 114	1 0	Lateefah Messam Sparks 143
4	Daniel Molnar 107	1 0	Adrian Archer-Lock 129
5	Nicholas Franklin 88	0 1	Matthew Kim 89
6	(16.0)	3 3	(15.7)
Wellington College won on board count			

pin numbers were picked at random and, in the U9s the two top teams were to play each other in the last round. Homefield were already 3.5 game points ahead of Hallfield and confirmed this with a 3-2 win Nottingham High had played the two top teams in rounds one and two

but finished the last 4 rounds with 18\20 to take third place with The Hall fourth. Mention should be made of Prashast Vir, Homefield board one, who won all seven games – an excellent accomplishment.

The U11s was dominated by Haberdashers' and Eltham College who actu-



	Dulwich College	2.7.09	Nottingham HS
	Yari Voropayev 155 (W)	½ ½	Kishan Lakhani 179
1	Alex Schymyck 95	0 1	Michael Keetley 150
2	Will Glover 82	½ ½	Oliver Exton 132
3	Robert Pagliuca	0 1	Jonathan Day 130
4	Nick Nicheperovich 40	0 1	Daniel Lin 137
5	Thomas Wood	0 1	Ted Pynegar 124
6	(15.5)	1 5	(17.5)

PLATE CHAMPIONSHIP

FINAL

	Reading School	3.7.09	Wilson's School
	Roy Zhang 110 (W)	½ ½	Anand Krishnan 147 (W)
1	Daniel Noel 72	½ ½	Aditya Gupta 120
2	Philip Archer-Lock 62	0 1	Mani (etc) Peri (etc) 129
3	Robert Starley 62	0 1	Adam Taylor 89
4	Adam Durrant	0 1	Keith Barker 95
5	Ryan Chen 68	½ ½	Philip Knott 79
6	(13.8)	1½ 4½	(13.11)

THIRD PLACE PLAY-OFF

	Winchester College	3.7.09	Aughton St Michaels CE Primary
	Ilya Iyengar 152 (W)	1 0	Natalie Cass 59
1	Patrick Butler 119	1 0	Victoria Sung 14r
2	Gideon Gray 115	1 0	Chris O'Connor
3	Alex Gordon-Brown 104	1 0	Mollie Hesketh 28
4	Will Peck	1 0	Oliver Deary
5	Ian Gannaway 53r	1 0	James Jackson
6	(16.6)	6 0	(10.9)

ally met in round three. The result of this was a draw but Haberdashers' remained ahead on game points and Eltham only drew their last round leaving Haberdashers' clear winners. Magdalen College claimed third place with Nottingham High fourth.

Running alongside these events was a small schools' competition in which 4 schools took part each playing the other twice. Blagdon, the local school, were

never behind in this and ended up comfortable winners from Langley Prep, Alcuin and Heathside Prep.

Thanks must go to Tony Corfe, National Schools' controller and Traci Whitfield, his assistant who put in a tremendous amount of time organising this and appear in three semi finals as well as the final – the amount of hours they must put in over the year is enormous.

Peter Purland

SEMI-FINALS

	Wilson's School	2.7.09	Aughton St Michaels CE Primary
1	Anand Krishnan 147 (W)	1 0	Natalie Cass 59
2	Aditya Gupta 120	1 0	Victoria Sung 14r
3	Mani (etc) Peri (etc) 129	1 0	Chris O'Connor
4	Adam Taylor 89	1 0	Mollie Hesketh 28
5	Keith Barker 95	1 0	Oliver Deary
6	Nathan Heal 70	1 0	James Jackson
	(14.2)	6 0	(10.9)

	Reading School	2.7.09	Winchester College
1	Roy Zhang 110 (W)	½ ½	Ilya Iyengar 152
2	Daniel Noel 72	½ ½	Patrick Butler 119
3	Philip Archer-Lock 62	0 1	Gideon Gray 115
4	Robert Starley 62	0 1	Alex Gordon-Brown 104
5	Adam Durrant	0 1	Ben Challen 80r
6	Ryan Chen 68	1 0	James Kennedy
	(13.8)	2 4	(16.8)
Reading School won on age handicap			

Route to the ECF National Schools Finals

The 2009 Final of the ECF National Schools Championship sponsored by Yateley Manor took place at Uppingham School over 2 days at the beginning of July. Wellington College won a hard fought tournament for the first time in their history.

Wellington qualified for the Finals by winning their division for the first time, however they were well tested in the divisional stages by schools with strong reputations in this tournament.

The first match was against Queen Elizabeth Barnet School for boys. This was a tremendously hard fought game with Akash Jain securing the match in the last minute of play.

The next match was the Quarter finals and Wellington played the current National Champions Millfield School in a very hard fought match that could have gone either way. Again the match was decided in the last minute of the game when Felix Ynojosa on Board One won his match, resulting in 4½ – 1½ win overall. This meant Wellington had now qualified for the Semi Finals, and hopefully the Finals, scheduled to take place in early July at Uppingham School.

These two matches set up a tremendous finals competition; possibly the strongest in the history of the tournament. Wellington prepared for this by arranging friendly fixtures with Crowthorne Chess Club who were able to field a team stronger than any of the schools in the competition. Wellington had their confidence boosted by drawing the first and then winning the second of two matches. In the week before the competition the team were further put through their paces by GM Nick Pert who played half the team simultaneously on consecutive days. A 6 - 0 win to Nick Pert ensured that the team were not over confident going to Uppingham.

The team travelled up the day before the tournament in order that they could use the morning to warm up for their matches. On the morning of the competition they warmed up with a mini tournament against each other.

In the Semi Finals Wellington faced Norwich School who proved to be a formidable force and punched well above their grade weight. Initially Wellington found themselves 1 - 0 down after 10 minutes. The pressure increased when the next game to be decided looked to be going Wellington's way, but a mistake in the end game meant that Wellington found themselves 2 - 0 down. The rest of the team responded magnificently with solid wins from Matthew Kim on board 6 and Felix Ynojosa on Board 1. This left Wellington needing 1 point to win on board count from Alex Galliano and Akash Jain. They were both in poor positions, but managed to retrieve the situation with seconds left on the clock, which meant they both secured a vital half point each. Much credit must be given to Norwich who played some excellent chess and were unlucky to lose the match on board count after drawing 3 - 3.

On the day of the final the Wellington team had their 'games faces on' and within a few minutes of the opening play it was clear that this would not be a repeat of the semi-finals. Nottingham who had appeared in each of the last five finals was slightly stronger on overall grade, but Wellington was confident having won a tough semi final. Wellington quickly notched up three wins to secure the match on age handicap with Adrian Archer Lock securing the winning point. The final score finished $4\frac{1}{2} - 1\frac{1}{2}$ to Wellington.

The top two performers were Matthew Kim on board six and Felix Ynojosa on board one who both finished up with 2 out of 2. Many thanks go to both GM Nick Pert and IM Andrew Martin who coached the players in the team during the year.

The team members were Felix Ynojosa, Alex Galliano, Akash Jain, Lateefah Messham Sparks, Adrian Archer lock and Matthew Kim.



Summerscale Chess Coaching and Tournament Day

AUGUST
2009

Saturday 27th June 2009, RESULTS

Congratulations to all competitors who played in this spectacular combination of chess tournament and coaching. The coaching was provided by members of the Pride & Prejudice 4 Nations Chess League team. Thank you to our coaches Grandmaster Chris Ward, Rosalind Kieran and two of the rising junior stars of English chess Callum Kilpatrick and Elliott Auckland.



Children played a round of chess and then received coaching for half an hour. They then immediately played another round of chess, to put their newly learn chess skills into effect, and thus the day continued.



No competitor could win more than one prize, which were awarded as below:



Tournament Winner

2nd
3rd =

Adrian Kozhevnikov
William Houghton
Fraser Barclay
Conrad Barclay
Xavier Macado

King's College
King's House
Fulham Prep
Colet Court
King's House

Age group prizes

Under 6

Boy
Girl

Luke Parsons
Alice Hargreaves

King's House
Pembridge Hall

Under 7

Boy
Girl

Thomas Whitehead
Jasmine Ventham
Asia Pesaro

King's House
Kensington Prep
Blackheath High

Under 8

Boy
Girl

Sam Edwards
Anika Patel

King's House
Croydon High

Under 9

Boy
Girl

Ben Mercer
Anahita Laverack

King's College
Charterhouse Square

Under 10

Boy

John Dickin

King's College



**Best player from their school
(not winning an age group or section prize)**

Bute House	Anjali Pillai
Kensington Prep	Senara Gambhir
King's House	Nicholas Houghton
King's College	George Dickin
Fulham Prep	Fleur Lauriot Prevost, Lissy Walker
Pembridge Hall	Emmanuelle Girod
Croydon High	Kristin Agyekumhene, Jodie Bowen

Congratulations to all competitors and thank you to Kensington Preparatory School who hosted the day.



We hope to see you at the next Summerscale Chess Coaching and Tournament Day soon.

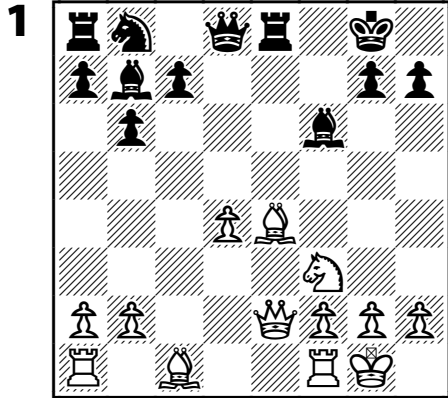
Updates are available on the Summerscale website: www.chessuk.com

Claire Summerscale

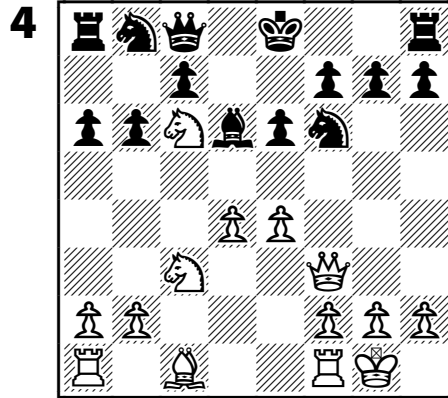


The POPULAR CHESS QUIZ PAGE

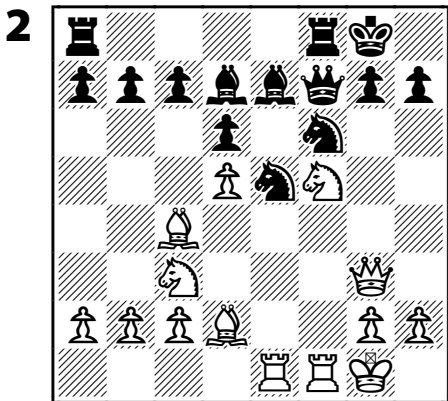
Find the best win!



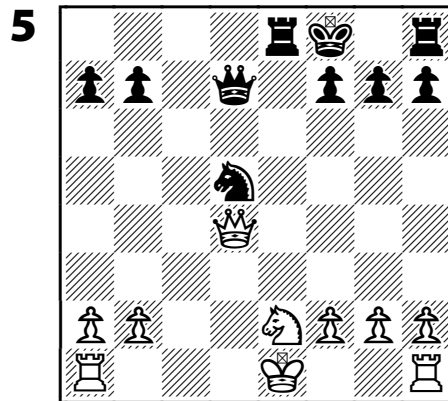
White to move and win.



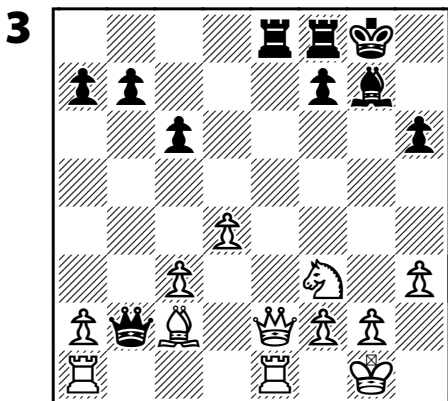
White to move and win.



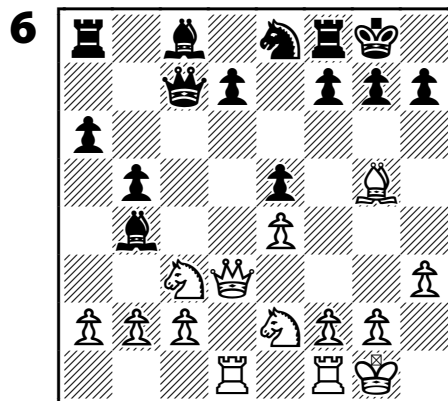
White to move and win.



Black to move and win.



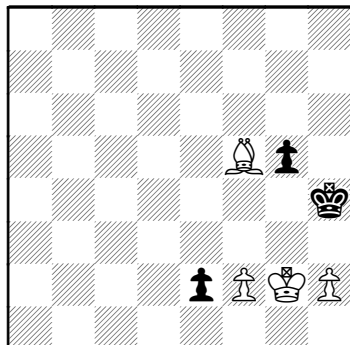
White to move and win.



White to move and win.

JULY'S PRIZE PUZZLE ANSWER

CHEKHOVER 1954



White to play.
What should the result be?

1. ♔g4!! e1♔

1... ♖xg4 2. f3+ ♔f4 3. ♔f2 e1♔+
4. ♔xe1 ♖xf3 5. ♔f1=

2. h3 ½-½

This sets up a fortress. Extraordinarily, Black cannot win thanks to his entombed King.



Best Quiz Answers for Page 11

1. 1. Qc4+
2. 1. Nh6+
3. 1. Bh7+
4. 1. Nxb8
5. 1. Qb5
6. 1. Nd5 Qa6 2. a3 Bd6 3. b4



English Chess Federation (ECF) Junior Chess Magazine

The Right Move

Editor:

Andrew Martin

a.martin2007@yahoo.co.uk

ECF Director of Junior Chess & Education:

Peter Purland.

director.juniorchess@englishchess.org.uk

Proofers:

Ian Hunnable, Bob Long, Andrew Martin.

Design/Layout: Bob Long.